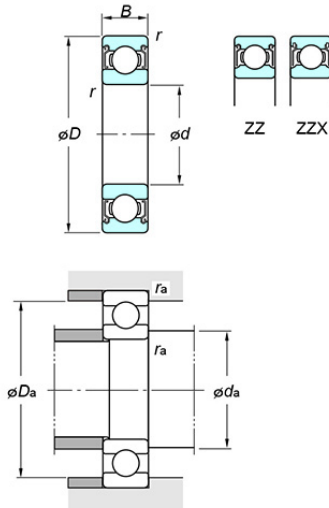


Deep groove ball bearings - Single-row - Shielded/sealed type - Shielded ZZ



Bearing No. 6020 ZZ

Specifications

(Boundary dimensions ...etc)

d(mm)	100
D(mm)	150
B(mm)	24
r(min.)(mm)	1.5
Basic load ratings : Cr(kN)	75.2
Basic load ratings : C0r(kN)	54.2
Fatigue load limit : Cu(kN)	2.70
factor : f0(l)	15.9
Limiting speeds(Grease lub.)(min-1)	4300
Limiting speeds(Oil lub.)(min-1)	

Mounting dimensions

da(min.)(mm)	108
da(max.)(mm)	112
Da(max.)(mm)	142
ra(max.)(mm)	1.5

Refer.

(Refer.)Mass(kg)	1.25
------------------	------